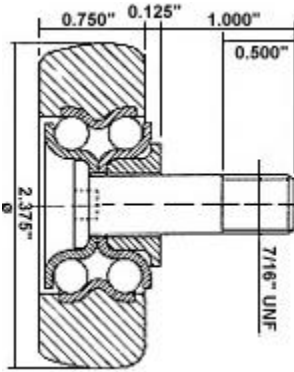


Thermoplastic Poultry Conveyor Wheels

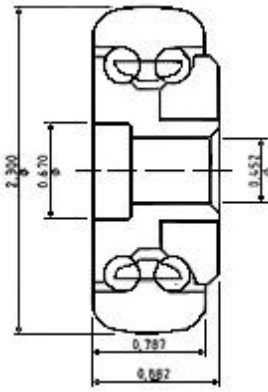


Heavy - Duty Wheel

Catalog Number: SNDL6007

Heavy-duty poultry wheel SNDL6007 is designed for the 3" I-Beam/X348 chain conveyor system. Its superior shock-load resistance results from stainless steel raceways and balls. Materials meet USDA requirements. Supplied with integral stud, lock washer, and nut.

Load Capacity: 155 lbs.

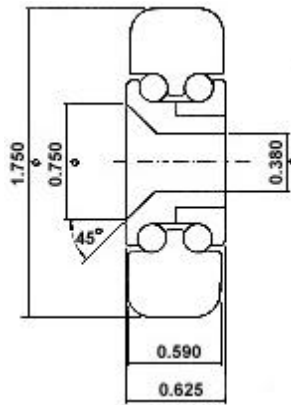


Medium - Duty Wheel

Catalog Number: AC115MDW584

Designed for 3" IBeam/X348 chain conveyors, this is a medium-duty wheel. Materials meet USDA requirements. Major benefits are its high load capacity, low friction, corrosion resistance, quiet operation, low maintenance, and freedom from lubrication.

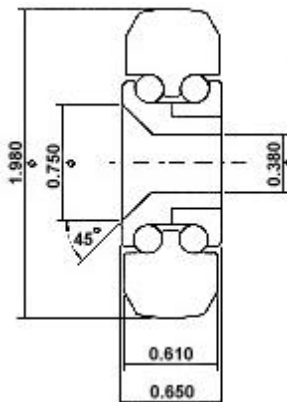
Load Capacity: 155 lbs.



Medium - Duty Wheel

Catalog Number: AF6 DWM / 2Y/D

Used on round pipe systems. Medium-duty poultry wheels have been tried and tested over 15 years. The race materials are acetal. Balls are SS400 series. Load Capacity: 130 lbs.



Medium - Duty Wheel

Catalog Number: CW0600/CW0032

Used on round pipe systems. Medium-duty poultry wheels have been tried and tested over 15 years. The race materials are acetal. Balls are SS400 series. Load Capacity: 130 lbs.